

# \$385,000 - 4738 Apple Field Way, Pace

MLS® #658797

---

## \$385,000

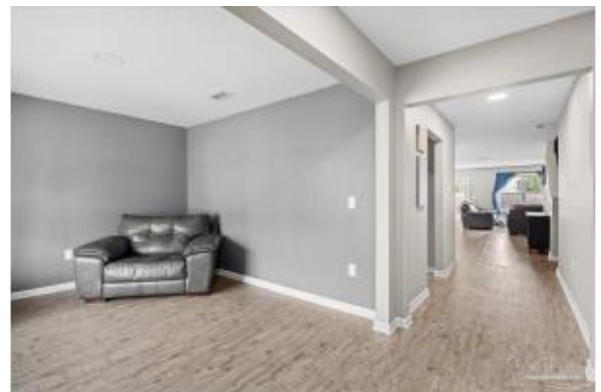
5 Bedroom, 2.50 Bathroom, 2,912 sqft  
Residential on 0 Acres

Wynfield, Pace, FL

5-Bedroom, 2.5-Bath brick home in a quiet community. Welcome to this warm and inviting two-story home, where classic charm meets everyday comfort. Nestled in a peaceful neighborhood, this beautiful brick home features a low-maintenance, fenced backyard. The primary suite, conveniently located on the main level, provides a retreat with a spacious walk-in closet outfitted with built-in organization, his-and-hers vanities, a soaking garden tub, and a separate shower for a relaxing end to any day. Upstairs, you'll find a cozy loft area, ideal for a home office, playroom, or just a comfy spot to unwind. Four additional bedrooms and easy-access attic storage ensure there's plenty of space for family and guests. The heart of the home is the welcoming eat-in kitchen, which opens to the family room and features rich maple cabinetry, a coffee bar station, a spacious island, a walk-in pantry, and ample counter space. With a built-in microwave, oven, and dishwasher, this kitchen is nice and open and ready for your family dinners. Rounding out this gem of a home is a two-car garage with extra driveway parking, giving you plenty of space for vehicles, guests, or even a golf cart. This warm and inviting home is ready to welcome you with open arms! Sellers are offering an allowance.

Built in 2017

## Essential Information



MLS® #	658797
Price	\$385,000
Bedrooms	5
Bathrooms	2.50
Full Baths	2
Square Footage	2,912
Acres	0.13
Year Built	2017
Type	Residential
Sub-Type	Single Family Residence
Style	Traditional
Status	Active

### Community Information

Address	4738 Apple Field Way
Subdivision	Wynfield
City	Pace
County	Santa Rosa
State	FL
Zip Code	32571

### Amenities

Parking Spaces	2
Parking	2 Car Garage, 2 Space/Unit
Garage Spaces	2
Has Pool	Yes
Pool	None

### Interior

Appliances	Electric Water Heater
Heating	Heat Pump
Cooling	Central Air, Ceiling Fan(s)
# of Stories	2
Stories	Two

### Exterior

Lot Description	Central Access
Windows	Double Pane Windows
Roof	Composition

Foundation                      Slab

**School Information**

Elementary                      Dixon  
Middle                              SIMS  
High                                Pace

**Additional Information**

Zoning                              County,Res Single

**Listing Details**

Listing Office                      Grand Realty, Inc.

Copyright© 2025 by the Multiple Listing Service of the Pensacola Association of REALTORS®. This information is believed to be accurate but is not guaranteed. Subject to verification by all parties. This data is copyrighted and may not be transmitted, retransmitted, copied, framed, repurposed, or altered in any way for any other site, individual and/or purpose without the express written permission of the Multiple Listing Service of the Pensacola Association of REALTORS®. Florida recognizes single and transaction agency relationships. Information Deemed Reliable But Not Guaranteed. Any use of search facilities of data on this site, other than by a consumer looking to purchase real estate, is prohibited.